



KINDERGARTEN NEWSLETTER



INTRODUCTION

This month marked the beginning of a wonderful and fruitful academic new year. Our little ones met each other, laughed, played, learned and explored!

We teachers are slowly getting to know them and their wonderful little personalities. We can't wait to see them evolve and bloom! The first few weeks may be hard to navigate but we promise, the best is yet to come!

IN THIS ISSUE

- MONTHLY RECAP
- HIDDEN GEMS
- REMINDERS
- IMPORTANT NOTES
- A LOOK INTO OUR ACTIVITIES
- GALLERY
- STAR STAFF OF THE MONTH
- A MESSAGE FROM OUR HOS
- FLASH NEWS!





THIS MONTH'S EVENTS

- | | |
|------------------------------------|---------------------------------|
| DATE: 28/29-8-2024 | DATE: 13-9-2024 |
| EVENT: Meet my teacher | EVENT: AlMawlid Alnabawi |
| DATE: 3/4-9-2024 | DATE: 20-9-2024 |
| EVENT: First day of school! | EVENT: Stay and play |
| DATE: 6-9-2024 | DATE: 23-9-2024 |
| EVENT: Read a book day | EVENT: Peace day |
| DATE: 9-9-2024 | DATE: 27-9-2024 |
| EVENT: Literacy day | EVENT: Heart day |

BASELINE & CAMBRIDGE CEM ASSESSMENTS WERE ALSO CONDUCTED TO DETERMINE STUDENT LEVELS.



PRINCIPAL JOINING KG2F ON THEIR HUNT

HIDDEN GEMS



Shukrullah Zadran KG1B

Shukrullah was spotted helping his friend Mustafa put the pencil on the correct starting point to write letter P!

REMINDERS

ARRIVAL & DISPERSAL TIME MONDAY TO THURSDAY

A: 7:15 to 7:30 am

D: 11:50 to 12:15 pm

ARRIVAL & DISPERSAL TIME ON FRIDAY

A: 7:15 to 7:30 am

D: 10:10 to 10:30 am

IN CASE OF ABSENCE

Please expect a leave application form from the teacher if your child is absent. This form has to be filled and sent back to the teacher as soon as possible.

HEAD OF SECTION EMAIL

headofkindergarten@thebloomingtonacademy.com





IMPORTANT NOTES

KGI/FS2
End of term 1
ASSESSMENT PORTION

KGI SUMMATIVE ASSESSMENT (TERM I)

UTW (Understanding The World) - 9/12/2024
Amazing me, Rainbow fairies
Our community
Living & non-living
Around the world

Maths - 10/12/2024
Numbers 1 to 10
2D Shapes

Literacy - 11/12/2024
Letters (s, a, t, p, l, n, m, d, g, o, ck, e, u, r, h, f, b, l)
CVC WORDS

NOTE: (Regular attendance is mandatory)
> Formative assessment (ongoing/daily assessment)
> Phonics assessment (ongoing/daily assessment)
> CLL & EAD (assessed through DOJO Portfolio)



KG2/YEAR 1
End of term 1
ASSESSMENT PORTION

KG2 SUMMATIVE ASSESSMENT (TERM I)

Science - 9/12/2024

Our bodies, family, food, countries/continents, our amazing senses, sound sources, loud and quiet, sound moves, sense of taste-cooking without fire, myself, similar and different, balanced diet, healthy food (fruits and vegetables), UAE past and present.

Maths - 10/12/2024

Ordering numbers 0-100, comparing numbers (before, after and between), number names (1-20), odd and even numbers (1-20), place value (compose, decompose & regroup numbers from 0 to 20), ordinal numbers (1st to 10th), using number lines, geometry (2d and 3d shapes), addition as combining, subtraction as take away, statistics (venn diagrams), pictograms & carroll diagrams.

English - 11/12/2024

Introducing the sounds (s, a, t, p, i, n, m, d, g, o, c, k, h, b, f, ff, l, ll, v, w, x, er, air, ure) & Graphemes (wh, ph, ew, igh, ur, ow, oi, ear, y, z, zz, ss, u, sh, th, long oo, short oo, oa, ar, orch, ng, ai, ee)

NOTE: (Regular attendance is mandatory)

- > Formative assessment (ongoing/daily assessment)
- > Phonics assessment (ongoing/daily assessment)
- > CLL & EAD (assessed through DOJO Portfolio)

CHARACTERISTICS OF EFFECTIVE LEARNING

PLAYING & EXPLORING



ACTIVE LEARNING



CREATIVE & CRITICAL THINKING



A PEAK INTO THIS MONTH'S ACTIVITIES

MEET MY TEACHER



A PEAK INTO THIS MONTH'S ACTIVITIES

FIRST DAY OF SCHOOL



A PEAK INTO THIS MONTH'S ACTIVITIES

READ A BOOK DAY



SEPTEMBER
2024



THE BLOOMINGTON ACADEMY AJMAN

A PEAK INTO THIS MONTH'S ACTIVITIES

INTERNATIONAL LITERACY DAY



A PEAK INTO THIS MONTH'S ACTIVITIES

ALMAWLID ALNABAWI



A PEAK INTO THIS MONTH'S ACTIVITIES

STAY AND PLAY



A PEAK INTO THIS MONTH'S ACTIVITIES

WORLD PEACE DAY



A PEAK INTO THIS MONTH'S ACTIVITIES

WORLD HEART DAY



A PEAK INTO THIS MONTH'S ACTIVITIES

ORGANIC MONTH ACTIVITY



For week 1, we had a storytelling session on the benefits of eating healthy foods and what is organic food.





A PEAK INTO THIS MONTH'S ACTIVITIES

ORGANIC MONTH ACTIVITY



For week 2, we went on a scavenger hunt in the school garden! students identified different fruits & vegetables and collected them in baskets!



Let's
HUNT!

A PEAK INTO THIS MONTH'S ACTIVITIES

ORGANIC MONTH ACTIVITY



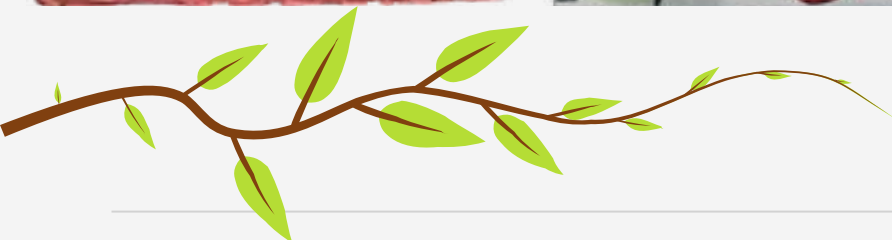
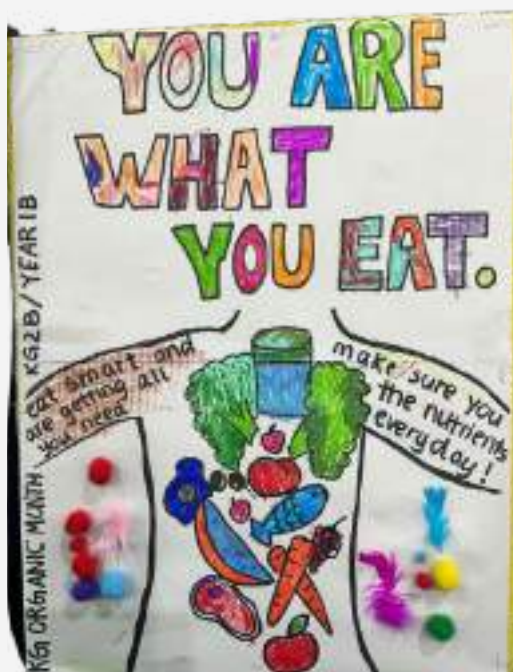
For week 3, students and teachers made a poster to promote healthy living and organic eating, the posters turned out so colourful and vibrant!





A PEAK INTO THIS MONTH'S ACTIVITIES

ORGANIC MONTH ACTIVITY





A PEAK INTO THIS MONTH'S ACTIVITIES

ORGANIC MONTH ACTIVITY



For week 4, students participated in a planting activity to make their own germination project! they put it by the window and will water it everyday!





STAR TEACHER OF THE MONTH



MS. PURNICHAPA
KG1B CLASS TEACHER

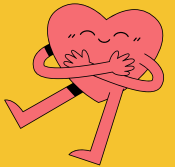
A MESSAGE FROM OUR HOS

DEAR PARENTS,

WELCOME TO OUR KG1 AND KG2 COMMUNITY! WE'RE EXCITED TO EMBARK ON THIS JOURNEY TOGETHER UNDER THE THEME OF "WORLD CHANGERS." EACH CHILD HAS THE UNIQUE POTENTIAL TO MAKE A POSITIVE IMPACT, AND TOGETHER, WE CAN NURTURE THEIR ABILITIES TO HELP THEM BECOME TRUE CHANGEMAKERS.

LET'S COLLABORATE AND SUPPORT OUR LITTLE ONES IN THEIR GROWTH AND DEVELOPMENT. THANK YOU FOR BEING PART OF THIS VIBRANT COMMUNITY!

MS. G. BANANY RAO
HEAD OF KINDERGARTEN



FLASH NEWS!

WE HAVE A SCHOOL TRIP COMING UP!



DATE AND VENUE TO BE SHARED SOON!

Further Info:
www.thebloomingtonacademy.com